



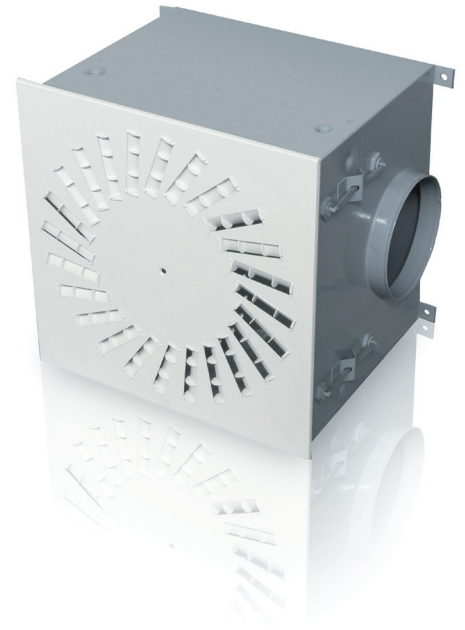
HS-Ceiling Outlet Filter

This product serves as device for supplying sterile air free of particle and germs. This diffuser outlet for turbulent air supply is used within laboratories, hospitals, or cleanrooms.

A circulatory closed false ceiling-connection will be customarily designed. The dimensions are also customizable. The absolute airtight manufactured housing is non-corrosive and easy to decontaminate. Welded retaining plates make installation easy. The outlet will be securely fastened by centred brackets, which are easily removed for filter exchange or surface scanning.

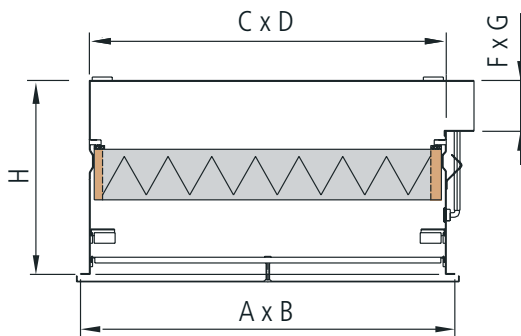
The Ceiling Outlet meets requirements according to DIN 196, VDI 2083, EN 14644-1 as well as cleanroom regulations according to 91/536/EWG-GMP.

Due to the fact the casing is entirely welded, no sealing compound is needed.



Dimension Outlet [mm]			Height [mm]	Size of filter [mm]	Size of outlet [mm]	Nominal air flow [m ³ /h]
A x B	C x D	F x G				
341 x 341	322 x 322	55 x 322	250	305 x 305	350 x 350	160
322 x 322	474 x 474	80 x 474	275	457 x 457	500 x 500	390
593 x 593	574 x 574	100 x 574	280	557 x 557	625 x 625	580
611 x 611	592 x 592	105 x 292	300	575 x 575	625 x 625	620
646 x 646	627 x 627	110 x 627	305	610 x 610	655 x 655	705

Please ask for other desired dimensions and designs.



Form of delivery	<ul style="list-style-type: none"> filter housing outlet ready for plug in
Options	<ul style="list-style-type: none"> expanded test connection for easy direct access from side facing room housing serves as exhaust unit with integrated fine dust filter housing includes cleanable, lint extracting filter frame painted can be offered in various RAL-colors