



HS-S044 – HEPA Duct Filter Housing



This robust duct housing made of stainless steel 1.4301 or 1.4401 or 1.4571 with side service door for filter change. Arrangement of the door optionally on the left or right, in relation to the air direction. The housing frame with the wide sealing surfaces is also the connection frame for connection devices and air ducts. In addition to the sizes available as standard, the duct housings can be manufactured in any housing dimension for optimum adaptation to the conditions at the installation site. Support brackets for the filter cells and the functional rail contact pressure ensure an exact fit and a perfect seal between the sealing surface of the housing and the filter cells. The duct housings are supplied fully assembled in all system sizes. For larger volume flows, several units are combined next to each other.

The service doors for filter replacement are then arranged on the right and left. The surrounding 30, 40 or 50 mm connection flange can be drilled on site for easy connection to common ducts. Any transition pieces, e.g. to pipe ducts, are possible.

Dim. inkl. 50 mm flange	Width [mm]	804	1428	2052	2676	
Height [mm]	Filters on top of each other	Filters - beside to each other				
		1	2	3	4	
804	1	Filter qty.:	1	2	3	4
		Weight [kg]:	40	55	70	85
1428	2	Filter qty.:	2	4	6	8
		Weight [kg]:	55	70	90	110
2052	3	Filter qty.:	3	6	9	12
		Weight [kg]:	70	90	110	135
2676	4	Filter qty.:	8		12	16
		Weight [kg]:	110		135	160

Please ask for other desired dimensions and designs.



Installable filtertypes	Filterproperties	
Compact filters:	HS-Beta Pak HS-Beta Pak Yellow HS-Makro (auch EX) HS-Makro F HS-Makro FV	M5 to F9 (EN 779) ISO ePM10 to ISO ePM1 (ISO 16890)
HEPA filters:	HS-Mikro S (auch EX) HS-Mikro SF HS-Mikro SFV	E10 to H14 (EN 1822)
Molecular filters:	HS-Carbo Block HS-A053 HS-A055	adsorption of gaseous air impurities such as VOC's, Odours, harmful and corrosive gases such as H ₂ S or SO ₂

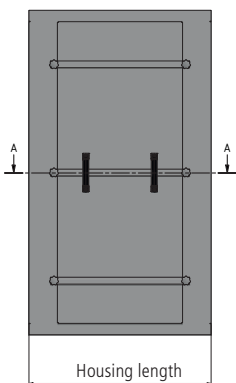
Form of delivery

- complete duct housing or as as easy to assemble single components

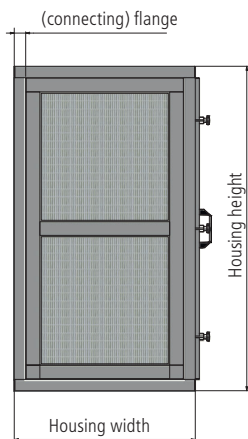
Options

- base material: galv. steel, painted steel, stainless
- combination of multiple filter stages within one housing possible
- pressure gauge
- pressure switch
- painted in various RAL-colors
- decontamination-proof varnish
- gasket bypass / leak test port
- antistatic for EX-protection

Side view



Front view



Cut A-A

